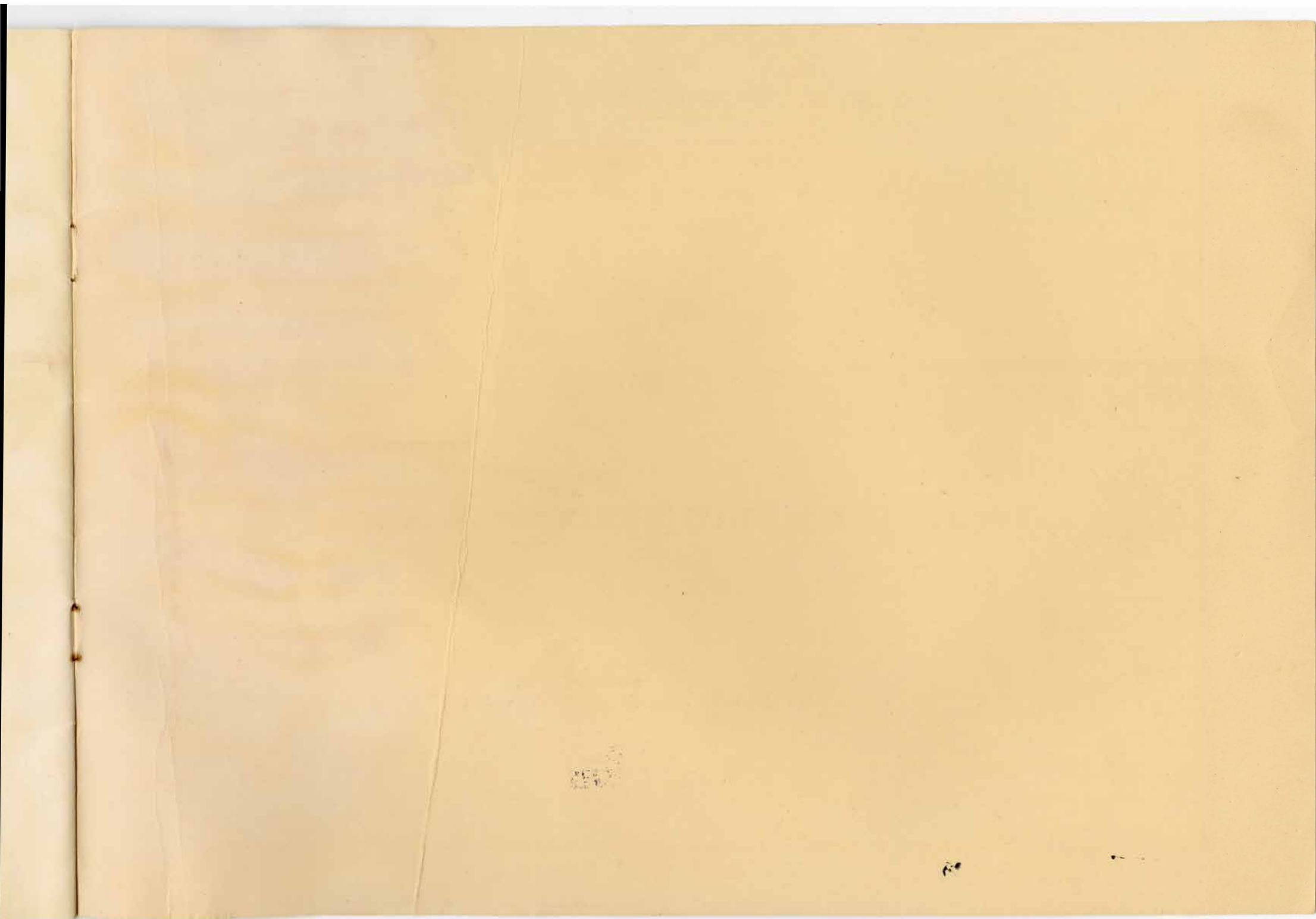




1825

1925

Horse - American Centennial
OF THE PACIFIC NORTHWEST



*O.M. Norlie, 1925
APK*

1825

FROM O. M. NORLIE
COLLECTION

1925

Souvenir Program

h

Norse - American Centennial

— of the —

Pacific Northwest



Sunday, June 28, 1925

University of Washington Stadium
Seattle, Washington

Prolog

Ved Hundredeaars-festen i Seattle den 28de Juni-1925

Fra Heden-old, fra Arilds tid
en gylden arv vi fik
og gjennom seklers fred og strid
fra far til søn den gik.
Den fylgte Nordens Poesi
med fagre drømmes fantasi.

Den levet gjennom dikt og drøm,
den lokket som en lur,
den bruste gjennom livets strøm
som Nordens fosse-dur,
den vokste som en vaarfri elv,
den vokste sterk som livet selv.

Det var vor races utfærds-lyst,
vort had til alt, som stængte,
vor drøm om eventyrets kyst,
vor arv, det var: at længte:
At ut fra fjordens trange bugt
faa følge maaken paa dens flugt.

Paa ukjent hav, mot fremmed land
brøt Dragens stavns sin vei,
bak sank i taake hjemmets strand
med sol paa fjell og hei.
Og færden gik ad ukjent led,
mot vester, der, hvor sol sank ned.

Til Myklegard, Jorsal og Gardariks strande
fandt de sin vei over stormvrede hav.
Drømte dog altid om fjernere lande,
længslernes arv ingen hvile dem gav.
Drog saa fra Grønland med livet i pant,
mot vester, mot vester, til Vinland de fandt.

Aarhundreder kom, aarhundreder svandt
og Vinland blev andre folks eie.

Den Vester-leds kurs, som fædrene fandt,
blev alverdens befærdede veie,
men gjennom vor Norrønna diktning og sang
lød altid vor længsel, vor farende trang.

Hundred aar er det nu siden,
liten slupp sin bølge kløvet.
Efter krigen, haard var tiden,
Vinlands-færd igjen de prøvet.
Kleng fra Rogaland han talte,
fagre fremtidsmaal han malte.

Kjæmpeskog og prærie-sletter,
frie folk i egne hjem,
alt, det menneskene sætter
høiest, vinket, lokket dem.
Snart en ny tids Viking-skare
rede stod mot vest at fare.

Sol over land, den Juli-dag,
da trofaste næver til avsked blev trykket.
Ved Stavanger-bryggen med vimpler og flag
laa "Restaurasjonen" til reisen smykket.
Da hviskedes sagte med bævrende mund
de ømmeste løfter i avskedens stund.

De saknet ei mod, de frygtet ei fare,
som navngjætte fædre, de vaaget en dyst.
De vidste at nu, som en høstfugle-skare
de drog over hav til en lokkende kyst.
Og maalet var herlig og haabet var ungt,
men avskeds-ordet var saart og tungt.

Venner stod der haand i haand,
sterke mænd mot taarer kjæmpet.
Vemod fylgte sjel og aand,
stemmen lød saa vek og dæmpet.

Drak med drøm om fremtids-maal
tyst sin siste avskeds-skaal.

Fra den kjære, gamle by,
hilset med kanoners brag,
drog de til en verden, ny,
til et fremmed land og flag.
For, som frie mænd at bygge,
sterk i troen, glade, trygge.

Vaagsom færd og djerne sjele
lyser klart i vor historie.
Pionærens milepæle
faar sin banebryter-glorie
og i eventyrets glands
bindes dem en minne-krands.

De drog først, vi fulgte efter,
her vi bygget hjem og kirke,
vi med haand og aandens krefter
signet lannet med vort virke.
Her med Nordmands mod og lyst
brøt vi land fra kyst til kyst.

Derfor: Hil dig, tapre skare:
som for hundred somre siden,
uten frygt for storm og fare,
bane brøt for eftertiden.
Tider komme skal, og svinde,
aldrig blegne skal dit minne.

Hil Jer I vestlandets døtre og sønner,
I, som tog Kleng Persens tanke
og med haab og tro og bønner
brøt igjennem tvilens skranke.
Og til Jer, I sjelestærke
slægten gir sit adelsmærke.

Fritz Wernerskjöld

The following Organizations are represented on the
Committee of the
Norse-American Centennial
of the PACIFIC COAST

■■■■■■■

BALDER S. B. SOCIETY
BAL TIC, I. O. G. T.
BETHANY LUTHERAN CHURCH
BLAAVEIS, D. OF N.
BREIDABLIK, D. OF N. P. K.
EIDSVOLD LODGE, S. OF N.
IMMANUEL LUTH. CHURCH
LEIF ERIKSON LODGE, S. OF N.
LUTHER WELFARE LEAGUE
NORDEN SINGING SOCIETY
NORWEGIAN-DANISH M. E. CHURCH
NORLANDSLAGET FEMBRØRINGEN
NORWEGIAN HOSPITAL ASSOCIATION
1ST NORWEGIAN LUTHERAN CHURCH
NORWEGIAN MALE CHORUS
STAVANGERLAGET
TRØNDERLAGET TORDENSKJOLD
VALKYRIEN LODGE, D. OF N.

— — — — —
AN APPRECIATION

¶ To our thousands of guests and visitors we extend a cordial welcome and greetings.

¶ To those who have labored on committees or otherwise assisted in making this Centennial a success we express our appreciation and gratitude.

EXECUTIVE COMMITTEE
Norse-American Centennial of the Pacific Northwest

Executive Committee



Thos. H. Kolderup
PRESIDENT.



P. W. Erikson
VICE-PRES.



O. Moe
SECRETARY.



Egil Mack
FINANCE



Mrs. Gunnar Lund
PUBLICITY



Mrs. S. Stray
REFRESHMENTS



Mrs. Reidar Gjølme
CHAIRMAN PAGEANT.



Rev. H. A. Stub
PROGRAM



Frank Oleson
RECEPTION



N. M. Nelson
DECORATION



Reidar Gjølme
TRANSPORTATION



Th. Gronning
ACCOMMODATION



P. H. Ongstad
SOUVENIR PROGRAM



Dr. J. O. Hall
SOUVENIR PROGRAM





PRESIDENT CALVIN COOLIDGE



MRS. CALVIN COOLIDGE

What President Coolidge Thinks

Forceful Sentences from his Minneapolis Address



These Norsemen whose beginnings in the United States we here celebrate have exercised a great influence upon our modern history and western civilization which it is difficult to match among any other like number of people. In many ways their influence upon Northern and Western Europe may be compared to that of the Greek states upon the civilization of the Mediterranean.

First Deep-Sea Navigators

They were the first deep-sea navigators. They pioneered the migrations which boldly struck across the western waters. They were at once the terrors of the Western Roman Empire and the guardians of the Eastern. The medieval Mediterranean was a happy hunting ground for them. They branded their name upon French Normandy, and from it descended upon Britain in the Norman Conquest from which there was the beginning of modern English history.

But even before William of Normandy had conquered at Hastings Leif the son of Erik, nearly 500 years before Columbus, appears to have found the New World. Indeed, there seems little doubt that several centuries before Columbus saw the light of day there was born upon American soil, of Norse parents, a boy who afterward became so great a mathematician and astronomer that his studies may have contributed much to the fund of knowledge which helped Columbus formulate his vision of the world

as we know it. Among the fascinating chapters in the history of the dark ages is the story of Iceland. As a little Norse Republic it maintained itself for several centuries as one of the real repositories of ancient culture in a world whose lamp of learning seemed near to flickering out. We have long known of the noble Icelandic literature which was produced during those generations of the intellectual twilight but we know too little of the part which Iceland performed as an outpost of the sturdy northern culture in bridging over the gulf of darkness between the ancient and modern eras of history.

These sons of Thor and Odin and the great free North shape themselves in the mind's eye as very princes of high and hardy adventure. From Norway to Iceland, from Iceland to Greenland, from Greenland to the mainland, step by step they worked their way across the North Atlantic. They found the western ocean, and it was a Norseman who first traversed Bering Strait and demonstrated that there was no land connection between Asia and North America.

* * *

One reared on the New England tradition of the Mayflower will find all the materials for a new legend of pioneering in the voyage of the Restaurationen. She was a sloop of 45 tons, whereas the Mayflower was rated as 180 tons. The Restaurationen sailed from Stavanger, Norway, July 4, 1825, with a desperately heavy cargo of iron and a party of 52 people. She came safely into the port of New

York after a voyage of fourteen weeks, which compares with nine weeks required for the historic passage of the Mayflower.

The arrival of the Restaurationen created a sensation among those inured to the sea. It was claimed that she was the smallest vessel that had ever made the transatlantic crossing. The New York authorities threatened to deny her the privileges of the port on the ground that she carried too many passengers and too much cargo. She was ultimately released, apparently through the influence of the Society of Friends.

* * *

There were Norwegians in both Army and Navy during the Revolution and the War of 1812.

* * *

These Northmen, one of whose anniversaries we are celebrating today, have from their first appearance on the margin of history been the children of freedom. Native to a rigorous climate and a none too productive soil, they had learned the necessity for hard work and careful management.

They were moved by that aspiration for a free holding in the land which has always marked peoples in whom the democratic ideal was pressing for recognition. Eager for both political and economic independence, they realized the necessity for popular education, and so have always been among the most devoted supporters of public schools. Thousands of them volunteered in the service of the country during the Civil and Spanish Wars, and tens of thousands in the World War. The institutions and the manners of democracy came naturally to them. Their glory is all about you, their living and their mighty dead. They have given great soldiers, statesmen, scientists, educators and men of business to the upbuilding of their adopted country. They have been rapidly amalgamated into the

body of citizenship, contributing to it many of its best and most characteristic elements. To their adaptability the nation owes much for its success in the enormous process of assimilation and spiritual unification that has made our nation what it is and our people what they are.

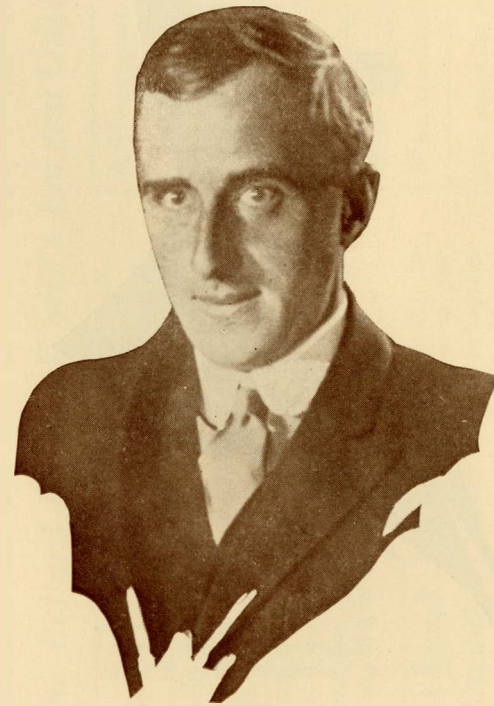
An enormous power has come to you, but you are charged with equally enormous responsibilities. Those responsibilities you have never failed to meet, that power you have never failed to sanctify. Therein lies the sole title to all the glory you have achieved in the past and therein will lie the sole title to all the glory that you will achieve in the future. Believing that there resides in an enlightened people an all-compelling force for righteousness, I have every faith that through the vigorous performance of your duties you will add new luster to your glory in the days to come.

Our America with all that it represents of hope in the world is now and will be what you make it. Its institutions of religious liberty, of educational and economic opportunity, of constitutional rights, of the integrity of the law, are the most precious possessions of the human race. These do not emanate from the government. Their abiding place is with the people. They come from the consecration of the father, the love of the mother, and the devotion of the children. They are the product of that honest, earnest and tireless effort that goes into the rearing of the family altar and the making of the home of our country. They can have no stronger supporters, no more loyal defenders, than that great body of our citizenship which you represent.

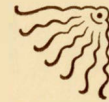
When I look upon you and realize what you are and what you have done, I know that in your hands our country is secure. You have laid up your treasure in what America represents, and there will your heart be also. You have given your pledge to the Land of the Free. The pledge of the Norwegian people has never yet gone unredeemed.

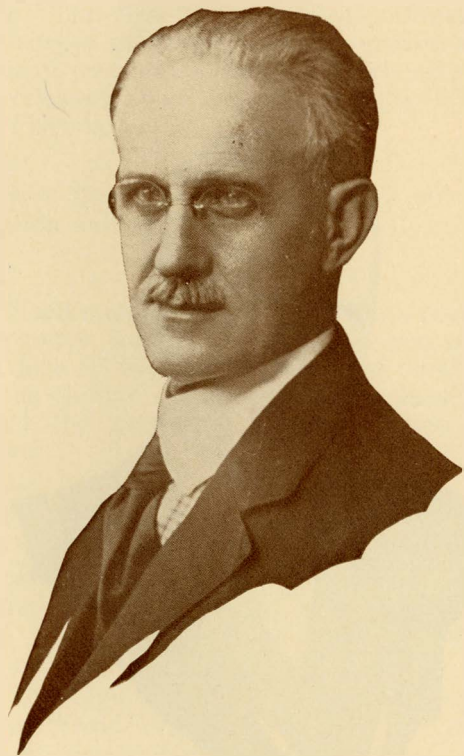


HON. PETER NORBECK
United States Senator from South Dakota

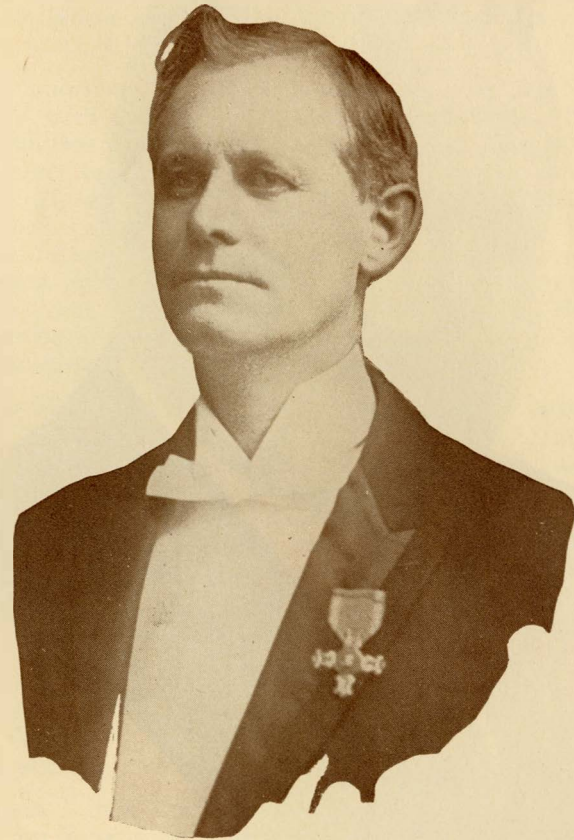


WILHELM MORGENSTIERNE
Official Representative Nordmandsforbundet





RUDOLPH MOLLER
Director Norwegian Male Chorus



CARLO A. SPERATI
Director Luther College Concert Band

**Tourists, Homeseekers
and Manufacturers
are looking toward BALLARD!**



The Ballard Locks—World's Largest Outside Panama Canal

The Locks

The famous Ballard locks, making possible Seattle's renowned fresh water harbor, Lake Union, and "Inland Sea," Lake Washington, are located in Ballard. These locks, the largest in the world, outside of the great locks on the Panama Canal, are the mecca of tourists in the Pacific Northwest. It is well worth the time expended to see the majestic ships raised from salt to fresh water levels and lowered on outgoing trips.

**Puget Sound
and Olympics**

The value of the trip to the locks is greatly enhanced by the enchanting view. Puget Sound, mirroring the rugged, snow-capped Olympics, which forms its background, is constantly in sight from the heights of Ballard.

**A Homeowners
Community**

Perhaps this, and the level contour of the district, have been deciding factors in making Ballard the home district it has grown to be. Ballard has a larger percentage of homeowners than any district in Seattle.

**Ideal for
Manufacturing**

Water facilities through the locks direct to the Pacific make the Ballard waterfront manufacturing sites especially desirable. Direct rail connections furnish the solution of quick transportation.

One of the largest terminals of the Port of Seattle is located in Ballard.

Don't Overlook BALLARD!
Seattle's Most Prosperous Community!

As the time rolls by —

21 Persons are accidentally injured every minute that passes.
One Person is accidentally killed every six minutes.
90,000 persons every year in the U. S. A.

The automobile alone kills one person every 48 minutes, and

ALL THAT ARE BORN, MUST DIE

Are your wife and children able to carry this awful risk?
Are you able to take care of yourself in case of total disability?
A policy in the Western States Life will protect your family and yourself against the loss of income thru death and accident.
It also gives you an income in your old age—if you live.
Kindly let me explain these protective features to you. It costs you nothing.

P. H. ONGSTAD

607 Securities Bldg. - - - SEATTLE, WASH.



COMPLIMENTS of

PACIFIC FISHING & TRADING CO.

Pier 8, Seattle

Fishing and Fishermen's Supplies



Program

SUNDAY, JUNE 28th, 1925

Forenoon, 10:00 o'clock

PRAISE SERVICE

BUGLES

MUSIC—a) Galsriddernes March *Chimes*

b) Procession of the Knights, from Parcifal.....

..... *Wagner*

Luther College Concert Band, Prof. Carlo A. Sperati, Director.

OPENING OF CENTENNIAL

THOS. H. KOLDERUP

President Centennial Committee

W. MORGENSTIERNE

Special Representative Norwegian Government

(Program continued on next page)

HAVE PERFECT FLOORS

Clear, Smooth, Sanitary, Beautiful

Finished By The American Floor Surfacing Machine

Floor Laying and Finishing

Old Floors Made New, Reasonable Prices

O. O. WICK

Phone SUNset 6883

3215 W. 65th, Seattle, Wash.

Compliments of

ANDERSON FURNITURE CO.

Established in business for the last 12 years in Ballard

COMPLETE HOUSE FURNISHINGS

5424 Ballard Ave. :: ::

Phone SUNset 5790

PROGRAM—(Continued)

HYMN—

Gud signe Norigs land,
kvar heim, kvar dal og strand,
kvar lund og lid!
Han lat det aldri døy,
han verje bygd og øy,
han verje mann og møy
til ævleg tid!

Me fekk det høgt og fritt,
me fekk det vønt og vidt
med hav og fjell.
Det stend so trygt og godt,
det stend so reint og blaatt
rett som eit gudeslott
med solskinstjeld.

I kjærleik varm og mild
me legg vaar vilje til,
daa veks det fram.
Daa fær det bløma blidt,
Daa fær det spyrjast vidt
og alltid standa fritt
for naud og skam.

Her stig det stort og blaatt
vaart fagre heimlands slott
med tind og taarn.
(Og som det ervidest ned
alt fagar' led for led,
det byggjast skal i fred
aat vorø born.

SONG—"Unfold ye Portals"Gounod
Massed Chorus, Rev. O. L. Haavik, Director.

ADDRESS (Norwegian)
Prof. M. O. Wee, Professor Luther Theological Seminary.

MUSIC—"Kirken den er et gammelt hus" (with Cathedral
Chimes).

Luther College Concert Band.

(Program continued on next page)

World's
Largest
Chain
Department
Store
Organization

J.C. Penney Co.
A NATION-WIDE INSTITUTION -
Incorporated
571 DEPARTMENT STORES
Ballard and 22nd N. W.

Reliable
Quality
Goods
Always
at Lower
Prices

While in Seattle visit our Store

Take a No. 28 or 5 car north bound, they stop at our corner.

The J. C. Penney Company welcome awaits you.

Plenty of room to park your car. No parking restrictions.

Compliments of

THROND P. BUGGE

Hauff's
5321 Ballard Ave.



**LUEBEN COSTUMING
COMPANY**

Established 1889

Theatrical and Masquerade
Costumes

WE RENT, SELL and MAKE TO ORDER

COSTUMES, WIGS and TIGHTS

1923 Third Avenue

Near Moore Theatre

Store: Main 7041

Phone Capitol 5146

Dependable Milk Service

You can now Buy

HI-GRADE MILK

AT YOUR GROCER, OR DELIVERED DIRECT

In our new plant, we have installed all the latest mechanical,
sanitary equipment for the pasteurization of milk—

For Your Protection

Order HI-GRADE Pasteurized Milk and Cream today.

Certified or Raw Milk

HI-GRADE MILK COMPANY

1201 Aloha St., Seattle

Scandinavian-American Line

The Pioneer Line

between the United States
and Norway

Offers Unsurpassed Service

to and from



**NEW YORK, CHRISTIANSAND
and OSLO**

Four, fast, modern, twin-screw passenger steamers..

FREDERIK VIII

UNITED STATES

OSCAR II

HELLIG OLAV

**SCANDINAVIAN AMERICAN
LINE**

Passenger Department

116 Cherry St.

(Hoge Bldg.)

Seattle, Wash.

Phone Main 5696

PROGRAM—(Continued)

SACRED NUMBER *Luther College Quartette*

SONG—"Break forth into Joy" *Barnby*
Massed Chorus.

HYMN—

A mighty fortress is our God, A trusty shield and weapon; Our help is He in all our need, Our stay, whate'er doth happen; For still our ancient foe Doth seek to work us woe; Strong mail of craft and power He weareth in this hour: On earth is not his equal.	Stood we alone in our own might, Our striving would be losing; For us the one true Man doth fight, The Man of God's own choosing. Who is the chosen One? 'Tis Jesus Christ, the Son, The Lord of hosts, 'tis He Who wins the victory In every field of battle.
--	---

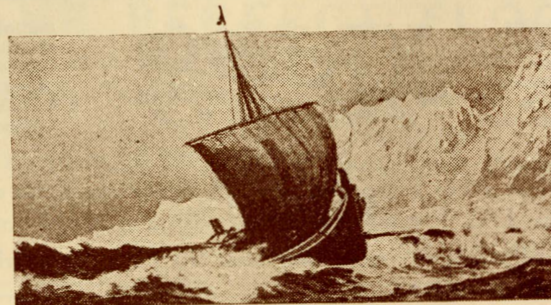
ADDRESS (English)

Rt. Rev. J. A. E. Naess, President Pacific District
Norwegian Lutheran Church of America.

DOXOLOGY

MUSIC—"Hallelujah Chorus" *Handel*
Luther College Concert Band.

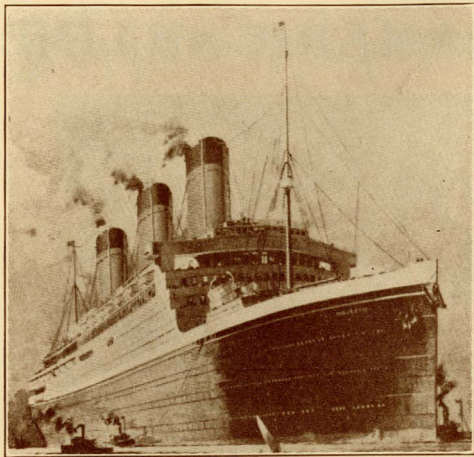
(Program continued on next page)



Nordlandslaget Femböringen

Møter i Norway Hall hver Fredags kveld. Forretningsmøte hver første Fredag i maaneden. Vi indbyder alle nordlændinger til at slutte sig til laget for at yde og nyde godt av nordlandsk selskabelighed.

Ingen indrødelisesavgift. Bare en dollar aaret i kontingent. Over 300 medlemmer.



White Star Line
American Line
Atlantic Transport
Leyland Line
Red Star Line
White Star-Dominion

Services from New York—Boston, Philadelphia and Canadian Ports to all Principal Ports in Europe.

Through Bookings to Scandinavian, Finnish and Continental Ports.

PANAMA PACIFIC LINE

To and from San Francisco or Los Angeles to Canal Zone, Havana and New York.

Special Rates to or from North Pacific Coast Ports.

International Mercantile Marine Travelers Checks Payable Everywhere.

Full particulars from Company's Office,

C. P. SARGENT, Manager

619 Second Avenue :- Seattle, Washington

or Local Steamship Agents

PROGRAM—(Continued)

PAGEANT

FOR COMPLETE SYNOPSIS OF PAGEANT SEE LAST PAGE

MOTTO: "*Norrøna folket, det vil fare,
det vil føre kraft til andre.*"

Leif Erikson—A.D. 1000 (Float)
 The Sloop Party—1825
 Tillers of the Soil (Float)
 Going West (Prairie Schooners)
 Pioneers
 Fishermen (Float)
 Col. Heg's Regiment—15th Wisconsin, 1862
 Foundation of Civilization (Design)
 Institutions of Mercy (Symbol)
 Music, Art and Literature (Float)
 Singers
 Home Craft (Float)
 Daughters of Norway
 Sons of Norway
 Lodges and Societies
 N. H. A. Junior Division.
 Finale—The Hope of the Future

(Program continued on next page)

HOLLAND HARDWARE CO.

5350 Ballard Ave. :: Sunset 5921

Hardware :: Paints and Varnishes

Sporting Goods

WALLIN & NORDSTROM

Quality :: Service

RETAIL SHOE DEALERS

1422 Second Ave. - SEATTLE - 4333 University Way

PROGRAM—(Continued)

- ADDRESS*Hon. Edwin J. Brown*
 Mayor City of Seattle
- NORRØNAKVAD, from Sigurd Jorsalfar.....*Grieg*
 Norwegian Male Chorus—Rudolph Moller, Director
 Alfred Halvorsen, Soloist
- ADDRESS*Hon. Roland H. Hartley*
 Governor State of Washington
- MUSIC—Peer Gynt Suite*Grieg*
 Luther College Concert Band
- FESTIVAL ADDRESS*Hon. Peter Norbeck*
 U. S. Senator from South Dakota
- SONGS—a) Naar Fjordene Blaaner.....*Alf. Paulsen*
 b) On the Sea.....*Dudley Buck*
 Norwegian Male Chorus—Rudolph Moller, Director
- ADDRESS*Madame Signe Lund*
 Greetings from Women in Norway
- MUSIC*Luther College Male Quartette*
- ADDRESS*Hon. W. Morgenstjerne*
 Official Representative Nordmandsforbundet
- “JA VI ELSKER DETTE LANDET”
 Led by Luther College Concert Band
- RESPONSE*Hon. Thos. H. Kolderup*
 Norwegian Consul
- XYLOPHONE SOLO
 C. Vittorio Sperati and Luther College Band
- LANDKJENDING*Grieg*
 Norwegian Male Chorus and Luther College Band
 Carlo A. Sperati, Director
- “AMERICA”
 Led by Luther College Concert Band



This is Sivert Knutsens “Kubberul” and the first 4-wheeled vehicle in the Stillaguamish Valley. It created more interest then, than a Rolls-Royce automobile would do now.



Pacific Lutheran College

PARKLAND, WASHINGTON

ESTABLISHED as an Academy in 1894. In 1917 it was consolidated with Columbia College at Everett, Wash. In 1920 the consolidated schools were permanently located at Parkland, where it has been operated as a junior college, offering High-School, Junior College and Normal courses.

- ☞ The school has had about 4,500 students since its opening in 1894 and about 450 graduates.
- ☞ During the schoolyear of 1924-25, 12 teachers were employed and 165 students enrolled. The class of 1925 had 25 graduates.
- ☞ The present president of the school is Rev. O. J. Ordal.



Compliments of

SEATTLE DAIRY

S. STRAY, Proprietor

MILK CREAM AND ICE CREAM

MAin 7854

THOS. H. KOLDERUP

FIRE INSURANCE
AUTOMOBILE INSURANCE
ACCIDENT INSURANCE

Commercial Bldg., 2nd and Madison
SEATTLE

Shoe



Mileage

To get the most mileage per dollar—Buy GOODYEAR WELT Shoes of a standard make and have them repaired on time by a shop displaying the above sign. Write for interesting Booklets Free.

COPELAND
 and
 RYDER
 SHOES



Mail in Your
 Shoes to be
 Repaired

Pioneers of Washington and Oregon

Extracts from an article by Martin Ulvestad, Noted Historian.



MARTIN TOFTEZON was the first Norwegian settler in the Territory of Washington. Born at Levanger, Norway, he left his home in the early 40's to satisfy his inborn love for adventure. The seven seas looked most inviting and he followed the call of Neptune until 1847 when he landed at New Orleans, La.

Here he heard some wild tales of the gold digging in California and joined the stampede to get rich quick. Disappointments, however, put a sudden stop to this venture so he continued his travel northward until he reached Oak Harbor, Wash., in 1850. He commenced tilling the soil and raising cattle with an energy entirely foreign to a sailor. A few years later he was joined by an old friend, Eilert Graham from Lindesnes, who had made the trip via Cape Horn. In 1863 Toftezon had the pleasure of getting his mother, Ementze Toftezon and his sister Bernhardine direct from Norway. They all liked the Puget Sound and two of them also liked each other with the result that Eilert Graham and Bernhardine Toftezon became man and wife on the 22nd day of October, 1866. Courtship was just as easy then as now, provided the girl was in sight, but the marriage ceremony had to be solemnized in Victoria, B. C., to be legally binding.

This is the first Norwegian wedding on record in the then territory of Washington.

In 1867 Mr. and Mrs. Graham with "Grandma" Toftezon

left Oak Harbor and moved across the Sound to Utsaladdy on Camano Island, but next year they made another move to Centerville, now called Stanwood, where they found nature's riches in greater abundance.

Here was founded the first real and still the largest Norse settlement on the Pacific Coast. It did not amount to much before about 1875 when O. B. Iverson, Nels Eide, Nels P. Leque, Anders J. Brue and Peter Leque, all from Hardanger, and Peter Gunderson from Værdalen joined the colony.

These were real specimen of Norse pioneers and were looking for a chance to wrestle with the gigantic resistance of nature's virgin treasure-chest. Stanwood had all such inducements to offer, and the great battle followed with the Norse Pioneers always on the offensive.

Some started to clear and cut the forest. There were trees 20 to 30 feet in circumference with no saw long enough to cut thru them. Others built dykes which reclaimed a vast area of lowlands previously submerged by the salt water. Thus these sturdy pioneers not only developed their country but also literally made it bigger. To get an idea of transportation facilities in those days, let us follow Mr. Sivert G. Brekhus from Voss on his trip up the Stillaguamish River to Silvana in 1874. He had bought his supplies in Seattle and had to get them to Silvana in a skiff. Arriving at the mouth of the river, he found same jammed with driftwood

and windfalls. The only way was to carry his supplies, including a heavy stove, over the windfalls and then pulling the skiff after. The stove especially made quite an "impression" on the broad back of Mr. Brekhus.

Rev. Lauritz Carlsen and Emil Christensen were the first ministers to visit the colony, but Rev. Chr. Jorgensen is generally regarded as the real ecclesiastic pioneer. He arrived in 1878 and the first Norse church in the territory of Washington was built at Stanwood that year.

Ole Nilsen Lee from Voss was the first white settler in Skagit County, taking up land near Mount Vernon in 1876. The fertile soil at Edison was a little later picked out by Gustav Volden from Sogndal and Rasmus S. Johnson from Egersund as their future home.

Anton C. Larson from Trondhjem and Anders Andersen from Fredrikshald were the Norse pioneers of Whatcom County.

Christopher Christophersen was the first pioneer of note in King County. He settled four miles from Kent, where a station still bears his name. Near Woodinville was started another settlement by Emanuel Nelson from Horten and Gustav Jacobsen, Lars Wold, and Ingebrigt Wold in 1876.

Kitsap County's first Norseman was Ole Stub from Förde Søndfjord (1875).

Tacoma received its first Norse immigrant in the person of Anton Anderson from Aalesund, whose daughter Annie was the first Norwegian child born in Tacoma (1873). After him came E. R. Ring and still later Mike Anderson who has the honor of being the first Norseman married in what is now the City of Tacoma. The bride was Mathea Johnson who had just arrived from Trondhjem.

Martin Christensen from Vadsø was the first Norse settler in Clarke County taking up land at La Center in 1875.

John Nielsen from Land, Norway, arrived in what is now State of Oregon in 1852 in company with a group of land-seekers from Illinois. He had left his wife and baby back east, but one of the returned pioneers brought her west the next year via Panama. Another pioneer deserving mention was Mathias Johnson from Arendal who started a small saw mill at Halls Prairie, near Silverton, in 1871. The following took up land and started farming. Peder K. Johnson from Nedre Stjørdal, Edward Gundersen from Førødal, Telemarken, Ingebret Larsen from Hadeland, John Fuhr from Lyster, Sogn.

The first Norwegian church in Oregon was built in 1883 by the Methodist congregation at Portland.

Personal Mention from the Pioneer Days on the Stillaguamish by Nels Bruseth,

In 1877 Mr. Iver Furnes bought three cows from Eilert Graham at Utsaladdy and, although the distance was only about 12 miles, it took him nearly a week to get them home. Sivert Brekhus made a little better record in getting some cows a distance of 10 miles in 4 days thru underbrush, mud, etc. There were no speed cops in those days — for obvious reasons. When Mr. Brekhus later transported some small pigs from John Silva's place, he had easier and faster traveling, for the pigs traveled steerage in a gunny-sack. Some people now object to the noise made by a jazz band, but those pigs surely "beat the band."

Mr. Rasmus Knutsen once went out to borrow a kettle for his wife. She was going to can berries. He started out for the Lovold place on the highland, but lost his way in the underbrush and didn't come home till next morning — without a kettle. He had been to Port Susan.

(Established 1906)

P. Torwick

**LADIES AND GENTS TAILORING
GENT'S FURNISHINGS**

5319 BALLARD AVE.

SUNSET 0602

Our success has been measured by our ability and willingness to serve you with the very best in quality and workmanship. To my many customers I am duly thankful for their continued patronage.

"We suit the hard to suit"

Phone Main 235

ALDERWOOD DAIRY PASTEURIZED and RAW MILK

Delivered to Your Home or at Your Grocer's

We solicit your patronage on the merits of our products

New Sanitary Plant, 21st and Broadway

EVERETT, WASH.

PHEASANT WIGGEN CO.

Norske "Undertakers"

Phone SUNset 0209

22nd & Market St.

Seattle, Wash.

Compliments

GEDLUND & JOHNSON GROCERIES AND MEATS

SUNset 0884

6403 32nd Ave. N. W.

Washington Posten

(Established 1889)

THE ORGAN *of the* NORWEGIANS *on the* PACIFIC COAST.

The first number of Washington Posten was published on the 17th of May, 1889. Since November 1905 the paper has been edited by the present editor who is also its owner.

Originally established as a local newspaper for Seattle and adjoining territory, it has gradually worked its way into every Norwegian community on the Pacific Coast.

From the land of the palms and perennial sunshine in Southern California, to the mountain valleys, mining camps and fishing centers in Alaska, from the lowlands in the west where the Pacific Ocean laps the forest covered beaches to the plains and valleys in Eastern Washington, Idaho and Western Montana, Washington Posten is known and read. It is the one far-reaching tie that unites Norse-Americans in the Farthest West in love to the motherland, in loyalty to our great and generous homeland.

Since 1924 there has also been established in connection with the newspaper a book shop, containing a complete assortment of Norwegian books of the best known authors.

The staff of the Washington Posten today:

GUNNAR LUND, publisher and editor

OLAF DIETRICHSON, secretary

S. REINHOLDTSEN, advertising manager

GEIR KLABOE, assistant secretary.

Office: 923-24 Seaboard Bldg., Seattle, Wash.

HAIL and WELL MET, NORSEMEN!

at the CENTENNIAL of the NORSE IMMIGRATION TO AMERICA

Leif Erikson Loge No. 1

Sønner av Norge

blev stiftet den 13de Mai, 1903 med vel 30 medlemmer; medlemsantallet er nu ca. 500.

Mange tusen Dollars er i aarenes løp blit utbetalt i sykehjelp idet at Logen betaler sine medlemmer 5.00 pr uke i klasse A og \$12.00 pr uke i klasse B. Logen har ogsaa en "Begravelseskasse" hvortil medlemmer betaler \$1.00 pr aar og ved et medlems død utbetales \$100.00.

Leif Erikson Loge sammen med Valkyrien Loge, Døtre av Norge, eier Norway Hall, en av de vakreste møtesteder i byen, desuten en byggetomt der ligger op til hallen, hvor man sandsynligvis i den nærmeste fremtid vil opføre en større møtesal for visse anledninger. Blandt andre ting kan ogsaa nevnes Logens bibliotek, cinema maskine og en vel indøvet garde (Drill Team) der forestaar som regel optagelsen av nye medlemmer.

Loge Leif Erikson har ogsaa hjulpet mange trengende landsmenn naar det knep som verst. Kom og ver med at bevare det norske sprog, kom og ta fordel av det Logen har gjort. Mend av god karakter og av norsk et, velkommen; slut dem til den store kjede.



Valkyrien Loge No. 1

Døtre av Norge paa Pacific Kysten

Denne loge blev stiftet 19de Oktober 1905. Dens formaal er at værne om norsk sprog, aandsliv og kultur samt at række en hjelpende haand, hvor og naar det trænges. Vi har god sykekasse hvorav \$5.00 uken betales i sykebidrag. Møter hver onsdags kveld i Norway Hall (2 sociale og 2 forretningsmøter) Optagelse av nye medlemmer finder sted hver 4de onsdag i maaneden.

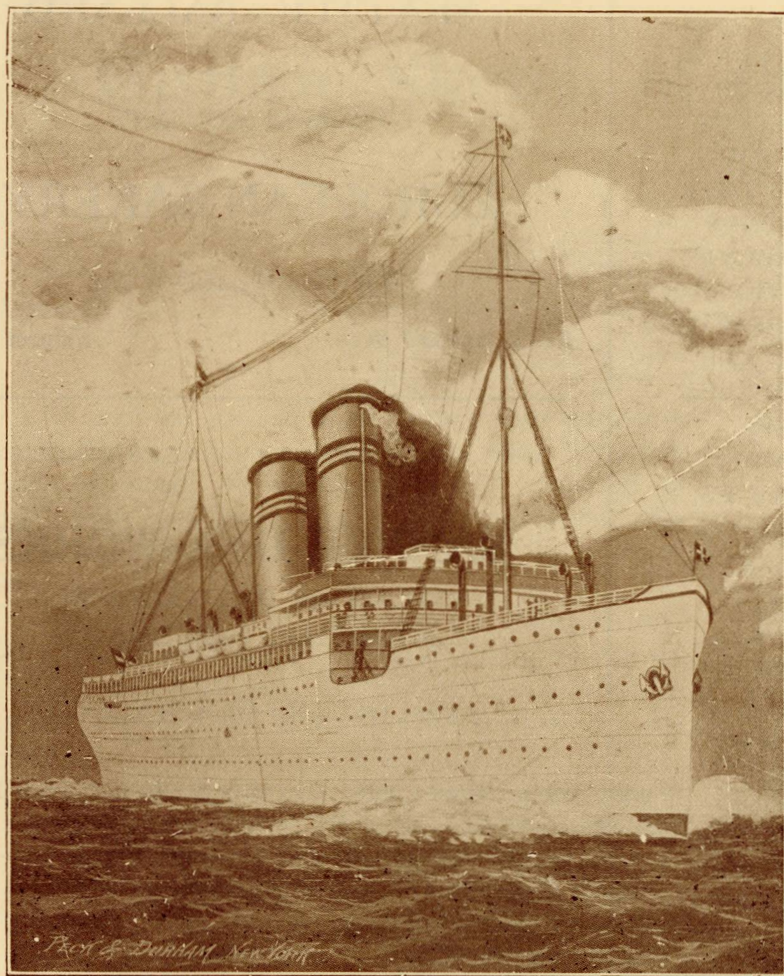
Efter 20 aars arbeide kan vi se tilbake paa mange og varige merker efter vort virke. Først og størst er vor andel sammen med Sønnerne i Norway Hall

med tilliggende tomt. Som moderloge for ordenen Døtre av Norge paa Pacific Kysten har vort arbeide vundet anerkjendelse over hele kysten. Men vi tror dog, at vort største arbeide har været det usynlige. Det, nemlig, at ha lindret nød og lidelse i vore norske hjem.

Dette er en forening som alle kvinder av norsk herkomst burde slutte sig til.

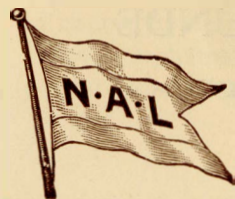


THE FAMOUS MAUD AND CAPT. ROALD AMUNDSEN
National Hero of Norway



I LØPET AV 100 AAR
1825 til 1925

er der vokset op
i U. S. A. og Canada
en norsk befolkning
omtrent like stor som
hele Norges befolkning
Bindeleddet
mellem
Norge vestenfor Atlanteren
og
Norge østenfor, er
Vor egen Linje



Den Norske Amerikalinje

919 SECOND AVENUE



SEATTLE, WASH.



THE
IMMANUEL
LUTHERAN
CHURCH
EXTENDS
TO YOU
AND YOUR
FRIENDS
A HEARTY
INVITATION
TO SERVICES
AND ALL
MEETINGS.
COME,
WORSHIP
WITH US;
JOIN US.
YOU NEED
THE
CHURCH
THE
CHURCH;
WANTS
YOU.

Immanuel Lutheran Church

Cor. Pontius Ave. and Thomas St.

REV. H. A. STUB, Pastor - - - 1215 Thomas St.

This congregation was organized Feb. 24, 1890. Has the best
Equipped church of any Lutheran congregation in the
Northwest. Has five divisions of Ladies' Aids.

SEATTLE—BALLARD

and

THOMAS MONSEN'S

EUROPEAN BAKERY

All Welcome You

5411 Ballard Ave.

SUnset 4845

ALTERATIONS and REPAIRING

BANNER DYE WORKS

STEAM and DRY CLEANING
of Rugs, Hats, Caps, Draperies

RUSH ORDERS OUR SPECIALTY

Phone SUnset 0943 Cor. 20th N. W. and Russell Aves.

Compliments of

ARNE SUNDE

Jeweler

Historic Sketch of the "Restaurationen"

In the New York Advertiser" on the twelfth of October, 1825 appeared an article under the following headline:

A NOVEL SIGHT

"A craft has arrived in our harbor with emigrants from Norway. It is a small boat of about forty-five tons, it brought 53 passengers of both sexes, all on their way to Orleans County, where an agent who came over some time ago has purchased a stretch of land for them.

The arrival of such a craft and the strangers from so distant a land, has aroused a great deal of interest in our city, especially the size of the ship which seems anything but fit for a voyage across the Atlantic.

An undertaking of this kind shows a great deal of courage on the part of the captain of the craft, and also an adventurous spirit on the part of the passengers. The greater part of the passengers are members of families from the surrounding county of a little town of the Southwestern part of Norway near Stavanger. Those who came from the farms are dressed in coarse homespuns, while those from the city wear calico, gingham and bright shawls, we presume imported from England.

The Craft is built after a model which is common for fishing boats on that coast, with a single topsail, sloop rigged. It arrived with the addition of another passenger, a little girl born during the voyage."

This small craft whose arrival in New York 100 years ago created a sensation, was the now famous "Restaurationen." This article was reprinted by the "Baltimore American," as well as many other papers, and was read with great interest. But those who read or heard of the unusual arrival of the small boat, had little or no conception of the importance of its coming.

The passengers themselves had no idea or understanding of the fact that they were making history—that they were the forerunners to a great immigration from Norway to the New World, where they could find greater chances for development and many more opportunities for getting ahead.

The sloop Restaurationen, "The Norse Mayflower," sailed from Stavanger on America's great day, July 4. It is not known, however, if the day was chosen or merely a coincident.

After a dangerous, but at the same time an adventurous voyage through the British Channel following a course around the Isle of Madeira they reached

New York on October 9, 1825. Every passenger landed in good health and in good spirits, also the extra passenger, "the Sloop Child," a daughter of Mr. and Mrs. Lars Larsen, born September 2nd. She was christened Margaret Allen, called for a Quaker woman in London, who had befriended Mr. Larsen. In 1857 Margaret was married to John Atwater of Rochester, N. Y., who later became a well known publisher in Chicago, Ill. Mrs. Atwater died at a ripe old age respected and loved by all who knew her.

The people in New York received these Norwegian Pilgrim Fathers with great kindness particularly the Quakers helped them in many ways, especially were they kind in contributing money for their fares, \$6 for each to take them from New York city to Orleans County, N. Y., near Lake Ontario.

There in Kendall Township these courageous people founded the first Norwegian settlement in America. Each family was given 40 acres of land thickly forested. To clear those woods meant years' of hard labor. The suffering they were compelled to undergo the first winter cannot be described.

Twenty-four of them, including children, built a log cabin in which they spent the remaining part of the winter of 1825.

In a few years they had worked themselves up to quite comfortable conditions, learned to understand and speak some English, also gained the respect of their American neighbors. Altho the call for farther West lured many of the first immigrants, still the first Norwegian Settlement did not die. From time to time others came from Norway making their first start in Orleans County, N. Y.

In this way the language and traditions of the Homeland were kept alive.

As to the Sloop "Restaurationen," no one knows anything about it. It was upon the arrival in New York sold for the sum of \$400 and never since been discovered by any Norwegian-American Historian. It most likely received a new name and served as a freight carrier.

So, unknowingly did their leader Kleng Peerson, the 22 men, ten women and twenty-one children give material to the first chapter of the Norse immigration.

Up to 1900 336,388 Norwegian immigrants have settled in our country; at the present time there are about 2,500,000 of Norse birth and descent according to the statistics of the Government.



THE NORWEGIAN HOSPITAL ASSOCIATION, Organized in 1913
by 25 women, at the present time about 900 men and women representing all Norwegian societies and churches
constitute the membership.

Norwegian
men and women
let us unite in
our efforts
and
reach the
AIM:
The
Norwegian
Memorial
HOSPITAL



ALL are
welcome to
join at
\$1.00 per year.
Come and
have
your part in
the work

In December, 1922, the present property was purchased. On January 7th, 1923, it was dedicated as the foundation of the
memorial to the Norwegian Pioneers.



GOING UP AND UP AND COMING DOWN — BELOW SUMMIT OF RAINIER — INSERT SNAPPED AT THE ONLY SUMMER SKIING CONTEST IN THE WORLD. — HELD ANNUALLY AT MT. RAINIER

To the Ski-Tournaments held annually at Mount Rainier, Norsemen furnish everything—except the mountain.

SYNOPSIS OF PAGEANT

*"Norsemen they would venture,
They would bring strength to others."
Bjørnstjerne Bjørnson.*

PROLOGUE

Leif Erikson—Float showing Leif Erikson and his men setting foot on American soil, A. D. 1000.

GROUPS

1. **The Sloop Folk**—The first group of Norwegian immigrants that came to America on the Sloop **RES-TAURATIONEN** in 1825, 22 men, 10 women, 20 children and a baby born on the voyage, and Kleng Peerson, their leader.
2. **Tillers of the Soil**—Typifying the sturdy Norwegian men and women who turned the wilderness into fertile fields and made their homes where white men had never lived before.
3. **Going West**—Into the unknown and undeveloped West, our forefathers went courageously and by their toil helped make it what it is today.
4. **Pioneers**—Woodsmen, Prospectors, Miners and Alaska Sourdoughs sought the treasures of the Golden West and of the Northland. In the early days it took courage and persistency to face the hardships and dangers of Pioneer life.
5. **Fishermen**—Reaching the Pacific Coast the Norwegian Fishermen braved the seas to bring in the hidden treasures of the deep.
6. **The 15th Wisconsin, Colonel Hans Heg's Regiment**—The 15th Wisconsin as well as many other regiments which served through the Civil War was composed of Norwegian volunteers. Through their loyal service and the giving of their lives to preserve the high ideals of their new-found homeland, the Norwegian immigrants have written an unforgettable chapter on the pages of American history.
7. **Foundation of Civilization**—Symbolizing the foremost institutions of the country, the **HOME**, the **CHURCH**, the **SCHOOL** and the **PRESS**, safeguarded by the **STATE**.

Overture and music during Pageant by
LUTHER COLLEGE BAND, Decorah, Iowa
Carlo A. Sperati, Director

8. **Institutions of Mercy**—Very early in their history, the Norwegians established **OLD PEOPLE'S** and **CHILDREN'S HOMES**, **DEACONESSES TRAINING SCHOOLS**, **HOSPITALS** and **WELFARE ORGANIZATIONS** throughout the country.
 9. **Music, Art and Literature**—A float in tribute to **AUTHORS**, **MUSICIANS** and **ARTISTS** of Norwegian birth or descent, who have enriched America's culture by their contributions.
 10. **Norwegian Male Choruses of the Pacific Coast**—Through their cooperative efforts and their interpretation of the melodies and folk songs of Norway, they are ever bringing inspiration to the Norse-Americans.
 11. **Home Craft**—**THE NATIONAL COSTUME OF NORWAY** is undoubtedly the most colorful inheritance of old Norse Art. The ornaments, embroideries and weavings are typical of the various parts of the country. Norse Weaving has of late years created quite an interest and has been taken up as a study in American Universities.
 12. **Daughters of Norway**—**VALKYRIEN**, **BLAAVEIS**, **THELMA**. Their aim is to unite Norse-American women into a Sisterhood through which they may preserve the traditions of the Motherland.
 13. **Sons of Norway, Leif Erikson**—A fraternal organization whose main purpose is to preserve the language and culture of their forefathers and to encourage Americanization among the newcomers.
 14. **Lodges and Societies**—
 15. **Norwegian Hospital Association**—The aim of the Junior Division is to "Carry On" in the hope of reaching the goal—**A NORWEGIAN MEMORIAL HOSPITAL**.
- Finale**—**THE HOPE OF THE FUTURE**. In the young generation is vested our hope for the future. Having given them the best of the Norse heritage, combining it with the love for the land of our adoption, they are indeed **AMERICANS**.



